

4

3

2

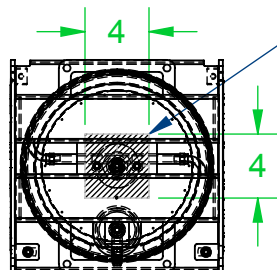
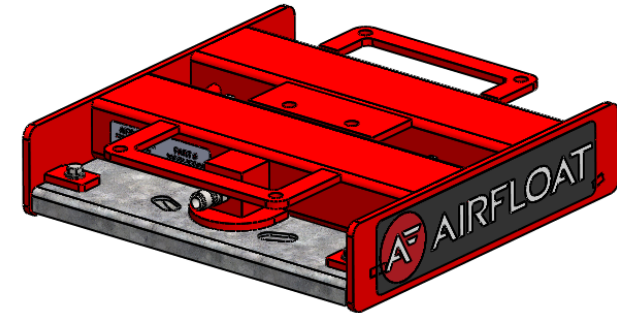
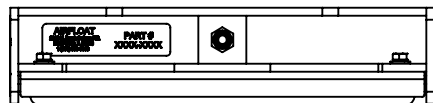
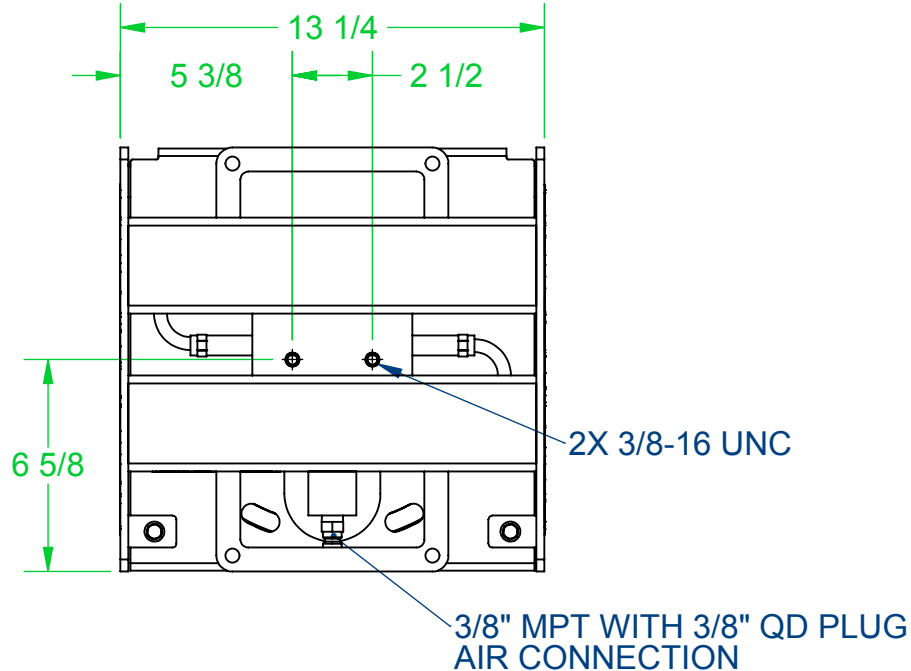
1

REVISIONS

ZONE	REV.	DESCRIPTION	DATE	REV. BY
------	------	-------------	------	---------

Specifications:

- SKID CAPACITY: 3000 LBS (1360 kg)
- SKID SIZE: 13-1/4" X 13-1/4" X 3" (337 X 337 X 76 mm)
- MATERIAL: STEEL
- AIR INLET: 3/8" MPT WITH 3/8" QD PLUG
- AIR BEARING LIFT: 1/4" (6.4 mm)
- MOUNTING HOLE SIZE: 3/8-16 UNC
- MOUNTING HOLE \varnothing TO \varnothing : 2.5" (63.5 mm)
- AIR BEARING: H-0012 12" (305 mm) \varnothing
- AIR FLOW: 11 SCFM (5.2 L/s) (DEPENDING ON FLOORS)



MINIMUM LOAD
CONTACT AREA
AT CAPACITY

NOTE: DIMENSIONS ARE FOR REFERENCE ONLY, TOLERANCE BLOCK DOES NOT APPLY

UNLESS OTHERWISE
SPECIFIED DIMENSIONS
ARE IN INCHES
TOLERANCES ARE:

FRACTIONS: $\pm 1/16$
DECIMALS: $\pm .03$
ANGULAR: $\pm .010$
ANGULAR: $\pm 1^\circ$

DO NOT SCALE DRAWINGS

WORK ORDER #

ROUTING

IA

DRAWN

PAB

2/6/15

THIS DRAWING CONTAINS INFORMATION PROPRIETARY
TO ALIGN PRODUCTION SYSTEMS LLC AND SHALL NOT
BE DISCLOSED FOR ANY PURPOSE NOR USED FOR
MANUFACTURING PURPOSES WITHOUT THE WRITTEN
PERMISSION OF ALIGN PRODUCTION SYSTEMS LLC.

TOTAL WT.

29.84 lbs

SHEET

1 OF 1



2230 Brush College Rd
Decatur, IL 62526
www.alignproductionsystems.com
sales@alignprod.com
Phone: 217.423.6001

TITLE

12" AIR BEARING SKID

SIZE

A

SCALE

1:6

DRAWING NO.

AF01012A-1

REV.

A

DISCARD ALL DRAWINGS AND/OR
BILL OF MATERIALS ISSUED PRIOR TO

2/6/2015

USE PRINT WITH THE LATEST DATE
FOR PRODUCTION

ENGR. APPROVAL _____

4

3

2

1

4

3

2

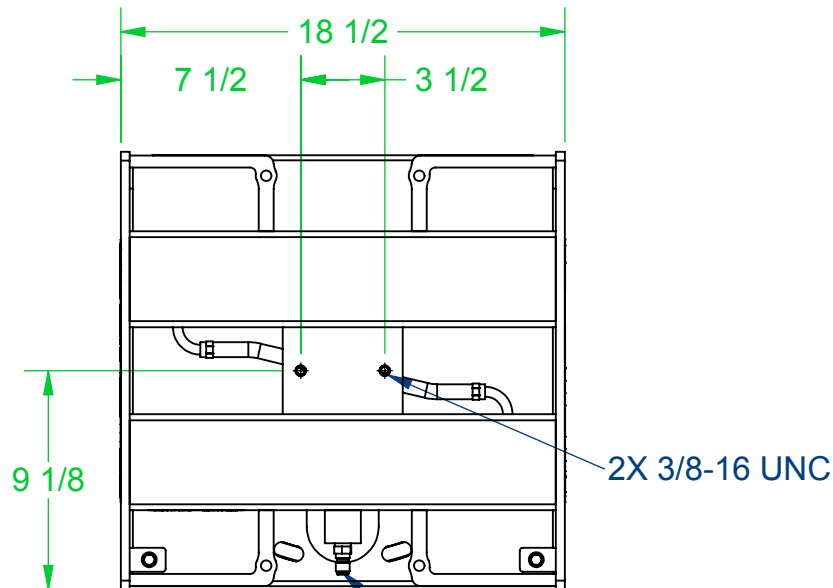
1

REVISIONS

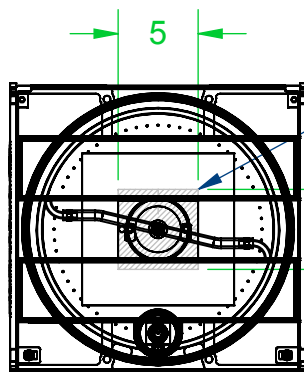
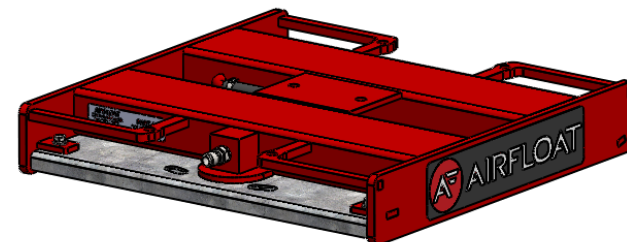
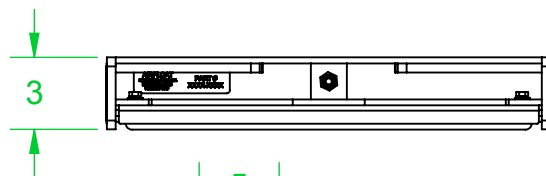
ZONE	REV.	DESCRIPTION	DATE	REV. BY
	A	RELEASED FOR MANUFACTURING	2/5/2015	PAB

Specifications:

- SKID CAPACITY: 6250 LBS (2800 kg)
- SKID SIZE: 18-1/2" X 18-1/4" X 3" (470 X 464 X 76.2 mm)
- MATERIAL: STEEL
- AIR INLET: 3/8" MPT WITH 3/8" QD PLUG
- AIR BEARING LIFT: 3/8" (9.5 mm)
- MOUNTING HOLE SIZE: 3/8-16 UNC
- MOUNTING HOLE ϕ TO ϕ : 3.5" (88.9 mm)
- AIR BEARING: H-0017 17" (432 mm) ϕ
- AIR FLOW: 16 SCFM (7.5 L/s) (DEPENDING ON FLOORS)



2X 3/8-16 UNC
3/8" MPT WITH 3/8" QD PLUG
AIR CONNECTION



MINIMUM LOAD
CONTACT AREA
AT CAPACITY

NOTE: DIMENSIONS ARE FOR REFERENCE ONLY, TOLERANCE BLOCK DOES NOT APPLY

DISCARD ALL DRAWINGS AND/OR
BILL OF MATERIALS ISSUED PRIOR TO

2/5/2015

USE PRINT WITH THE LATEST DATE
FOR PRODUCTION

ENGR. APPROVAL _____

UNLESS OTHERWISE
SPECIFIED DIMENSIONS
ARE IN INCHES
TOLERANCES ARE:

FRACTIONS: .XX \pm .03
DECIMALS: .XXX \pm .010
ANGULAR: \pm 1°

DO NOT SCALE DRAWINGS

WORK ORDER #

ROUTING

IA

DRAWN

PAB

2/5/2015

THIS DRAWING CONTAINS INFORMATION PROPRIETARY
TO ALIGN PRODUCTION SYSTEMS LLC AND SHALL NOT
BE DISCLOSED FOR ANY PURPOSE NOR USED FOR
MANUFACTURING PURPOSES WITHOUT THE WRITTEN
PERMISSION OF ALIGN PRODUCTION SYSTEMS LLC.

TITLE

17" AIR BEARING SKID

TOTAL WT.

50.21 lbs

SHEET

1 OF 1

SIZE

A

SCALE

1:8

DRAWING NO.

AF01017A-1

REV.

A

2230 Brush College Rd
Decatur, IL 62526
www.alignproductionssystems.com
sales@alignprod.com
Phone: 217.423.6001

4

3

2

1

4

3

2

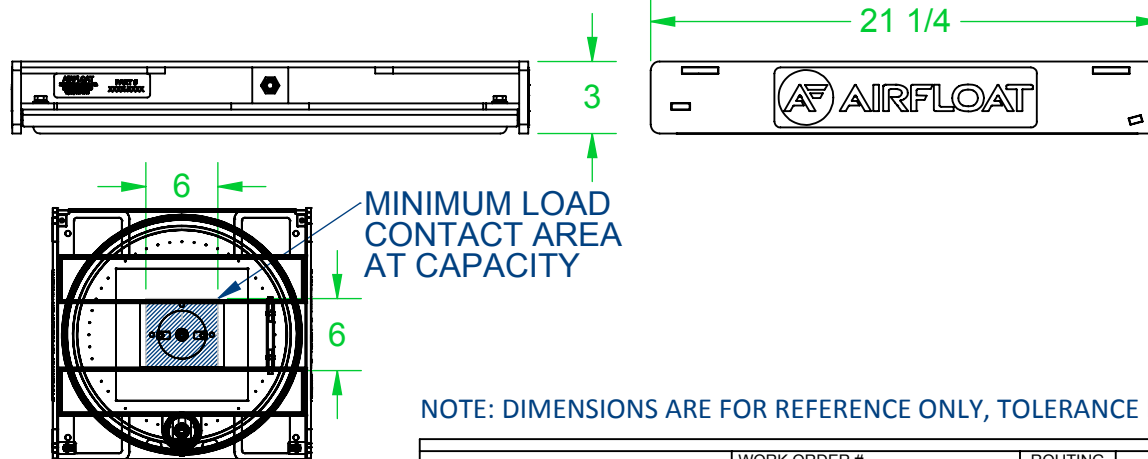
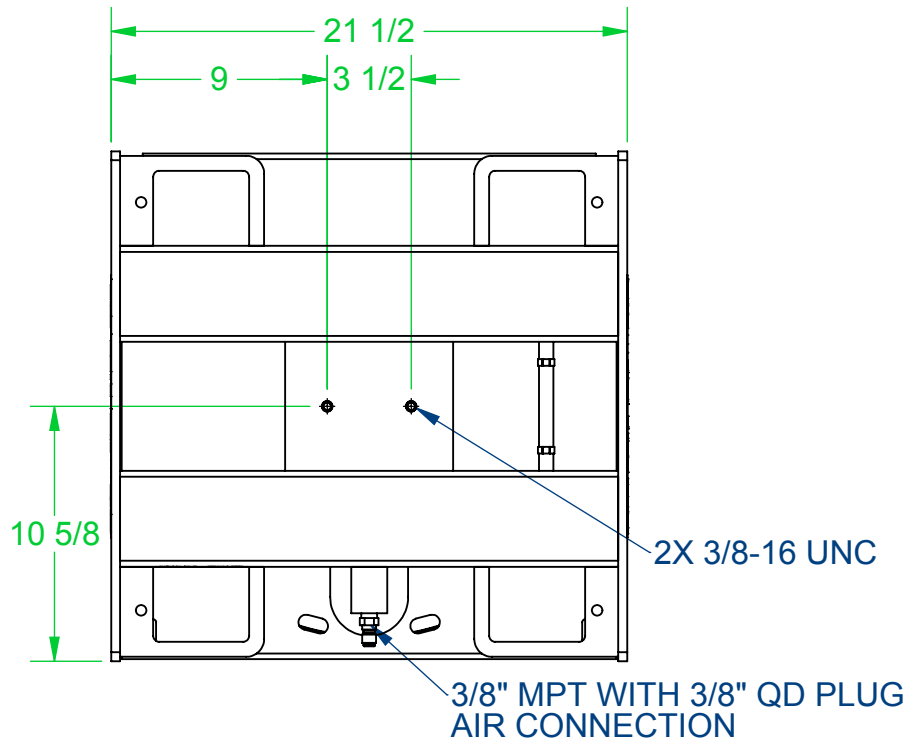
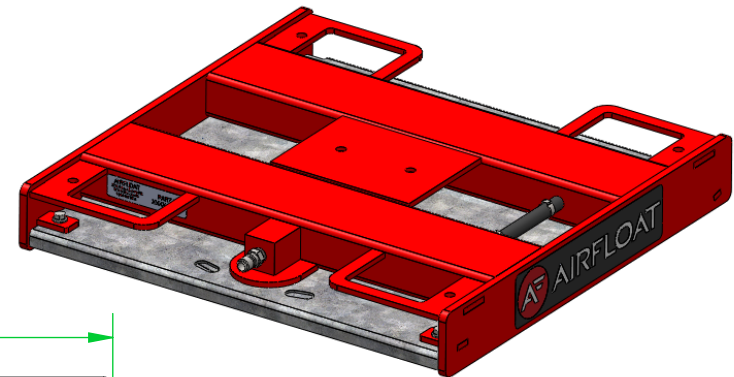
1

REVISIONS

ZONE	REV.	DESCRIPTION	DATE	REV. BY
------	------	-------------	------	---------

Specifications:

- SKID CAPACITY: 8,250 LBS (3,750 kg)
- SKID SIZE: 21-1/2" X 21-1/4" X 3" (546 X 540 X 76.2 mm)
- MATERIAL: STEEL
- AIR INLET: 3/8" MPT WITH 3/8" QD PLUG
- AIR BEARING LIFT: 3/8" (9.5 mm)
- MOUNTING HOLE SIZE: 3/8-16 UNC
- MOUNTING HOLE \varnothing TO \varnothing : 3.5" (88.9 mm)
- AIR BEARING: H-0020 20" (508 mm) \varnothing
- AIR FLOW: 18 SCFM (8.5 L/s) (DEPENDING ON FLOORS)



NOTE: DIMENSIONS ARE FOR REFERENCE ONLY, TOLERANCE BLOCK DOES NOT APPLY

DISCARD ALL DRAWINGS AND/OR
BILL OF MATERIALS ISSUED PRIOR TO

2/6/2015

USE PRINT WITH THE LATEST DATE
FOR PRODUCTION

ENGR. APPROVAL _____

UNLESS OTHERWISE
SPECIFIED DIMENSIONS
ARE IN INCHES
TOLERANCES ARE:

FRACTIONS: DECIMALS:
 $\pm 1/16$.XX $\pm .03$
ANGULAR: .XXX $\pm .010$
 $\pm 1^\circ$

DO NOT SCALE DRAWINGS

WORK ORDER #

ROUTING

IA

DRAWN

PAB

2/5/15

THIS DRAWING CONTAINS INFORMATION PROPRIETARY
TO ALIGN PRODUCTION SYSTEMS LLC AND SHALL NOT
BE DISCLOSED FOR ANY PURPOSE NOR USED FOR
MANUFACTURING PURPOSES WITHOUT THE WRITTEN
PERMISSION OF ALIGN PRODUCTION SYSTEMS LLC.

TOTAL WT.

58.86 lbs

SHEET

1 OF 1



2230 Brush College Rd
Decatur, IL 62526
www.alignproductionssystems.com
sales@alignprod.com
Phone: 217.423.6001

TITLE

20" AIR BEARING SKID

SIZE

SCALE

1:8

DRAWING NO.

AF01020A-1

REV.

A

4

3

2

1

4

3

2

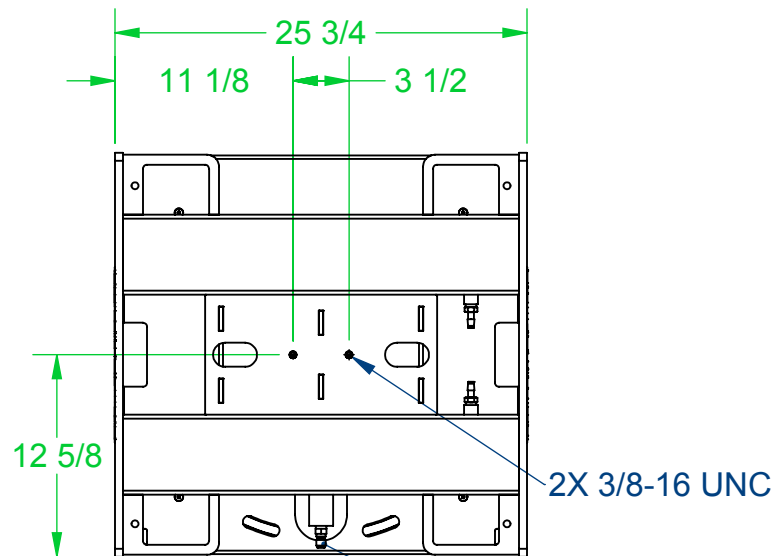
1

REVISIONS

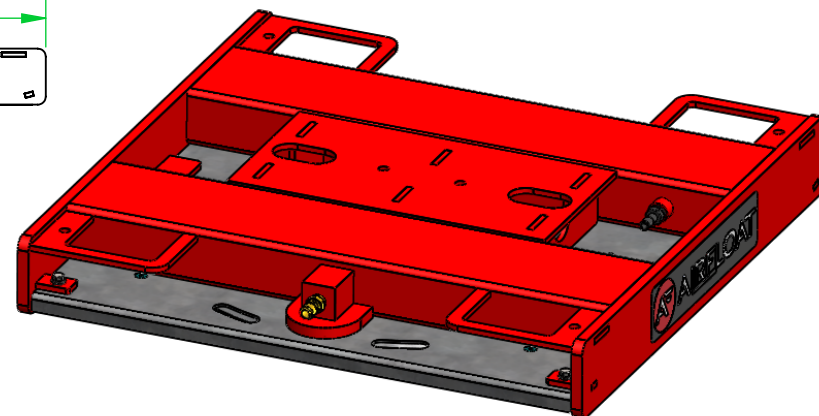
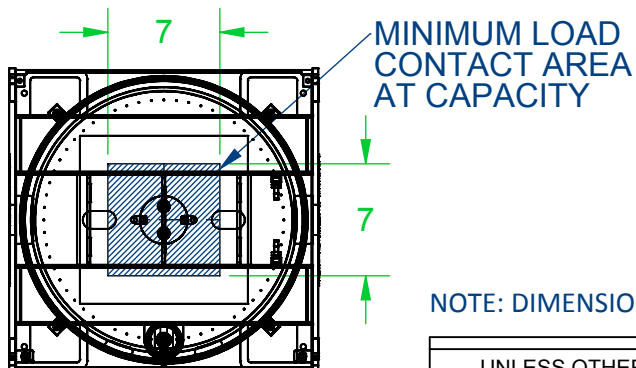
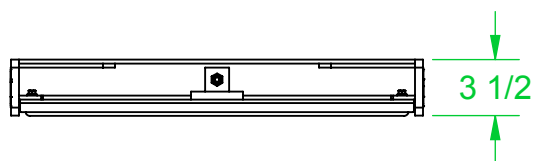
ZONE	REV.	DESCRIPTION	DATE	REV. BY
------	------	-------------	------	---------

Specifications:

- SKID CAPACITY: 12,500 LBS (5,680 kg)
- SKID SIZE: 25-3/4" X 25-1/4" X 3-1/2" (654 X 641 X 88.9 mm)
- MATERIAL: STEEL
- AIR INLET: 3/8" MPT WITH 3/8" QD PLUG
- AIR BEARING LIFT: 3/8" (9.5 mm)
- MOUNTING HOLE SIZE: 3/8-16 UNC
- MOUNTING HOLE \varnothing TO \varnothing : 3.5" (88.9 mm)
- AIR BEARING: H-0024 24" (610 mm) \varnothing
- AIR FLOW: 22 SCFM (10.4 L/s) (DEPENDING ON FLOORS)



3/8" MPT WITH 3/8" QD PLUG
AIR CONNECTION



NOTE: DIMENSIONS ARE FOR REFERENCE ONLY, TOLERANCE BLOCK DOES NOT APPLY

DISCARD ALL DRAWINGS AND/OR
BILL OF MATERIALS ISSUED PRIOR TO

7/14/2014

USE PRINT WITH THE LATEST DATE
FOR PRODUCTION

ENGR. APPROVAL _____

UNLESS OTHERWISE
SPECIFIED DIMENSIONS
ARE IN INCHES
TOLERANCES ARE:

FRACTIONS: DECIMALS:
 $\pm 1/16$.XX $\pm .03$
ANGULAR: .XXX $\pm .010$
 $\pm 1^\circ$

DO NOT SCALE DRAWINGS

WORK ORDER #

ROUTING

A

DRAWN

SRF

3/5/13

THIS DRAWING CONTAINS INFORMATION PROPRIETARY
TO ALIGN PRODUCTION SYSTEMS LLC AND SHALL NOT
BE DISCLOSED FOR ANY PURPOSE NOR USED FOR
MANUFACTURING PURPOSES WITHOUT THE WRITTEN
PERMISSION OF ALIGN PRODUCTION SYSTEMS LLC.



2230 Brush College Rd
Decatur, IL 62526
www.alignproductionssystems.com
sales@alignprod.com
Phone: 217.423.6001

TITLE

24" AIR BEARING SKID

TOTAL WT.

97.92 lbs

SHEET

1 OF 1

SIZE

A

SCALE

1:12

DRAWING NO.

AF01024-1

REV.

B-01

4

3

2

1

